

## Application guidelines for admission to GCC in October 2022

### 1. Eligibility

- 2nd-4th grade students of the Faculty of Engineering, students of the Faculty of Engineering (regardless of gender)
- 1st grade students of the Faculty of Engineering (female only)

### 2. Type of Housing

One unit is shared by three male students or three female students, including Japanese and international students. Men and women live on separate floors, and opposite-sex people are strictly prohibited from entering each floor.

Note: On a temporary basis, a cot may be brought into the living room and the following people may be accepted into the unit (arrangements will be made in advance).

- Those who come to Kyutech through the international student exchange program (short-term acceptance) implemented by the university.
- Those who are enrolled in Kyutech that has concluded an international exchange agreement with the University and are coming to the university through an international exchange program.

### 3. Conditions for moving in (collaborative learning)

- Residents should participate in collaborative learning that is held about eight times a year.
- Act as a buddy for those who come to the school through the international exchange program.

### 4. The number to be admitted

approx. 5 male students (including 4 international students)

~~/ approx. 3 female students (including 2 international students)~~ 1 female student (international student)  
\*Corrected 21 July 2022

### 5. Permission period

As a general rule, it is one year from October 1, 2022.

However, if a student who participated in the collaborative learning without absent and wishes to continue moving in applies for an extension of the period of stay and is granted permission, the extension can be extended for up to one year.

If you lose your status as a student of our university due to graduation, completion, withdrawal, etc., you will be evacuated.

### 6. Deadline for submission of application form

August 3, 2022 (Wednesday) 16:00 JPT

### 7. Where to submit application documents and inquiries

Please download the application form from the link below, fill it out, and send it by e-mail or bring it with you.

【Download from】 <https://www.tobata.kyutech.ac.jp/campus/gcc/>

【Where to submit application documents】

Kyushu Institute of Technology, Faculty of Engineering, Student Section

E-mail [koh-gakusei@jimu.kyutech.ac.jp](mailto:koh-gakusei@jimu.kyutech.ac.jp)

(Office hours: 9:00 a.m. to 5:00 p.m., Mon through Fri, excluding Sat, Sun, and holidays)



### 8. Selection Method and Results

The screening will be based on the statements in the 'Application form': 1. why you want to move in; 2. what you would like to do during your stay; 3. what you can say about yourself. If there are too many applicants, an interview may be conducted.

Applicants will be notified of the screening results by email around the end of August.

## 9. About GCC

(1) Rent: 15,000 yen/month

(2) Utilities: 6,000 yen/month (monthly fee may be revised depending on actual usage)

The usage fee and utility fee will be collected by the payment slip distributed at the beginning of each month.

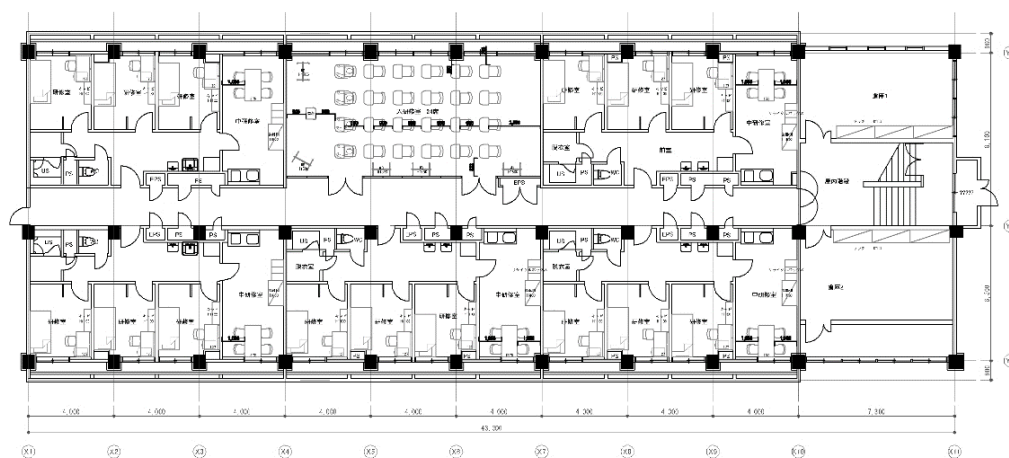
(3) Location: Kyushu Institute of Technology Global Cultivation Center

2-1 Sensui-cho, Tobata-ku, Kitakyushu City, Fukuoka 804-0015

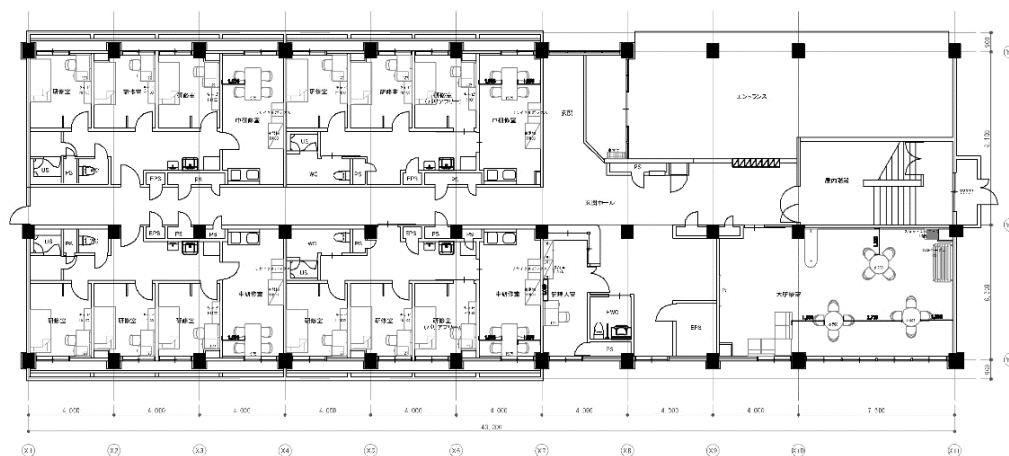
Number of occupants	42 people (3 private rooms and a common space make up a unit, and 14 units are located on the 1st to 3rd floors of the building. Two units on the first floor are barrier-free.)
Structure	Reinforced concrete construction (no smoking on the premises)
Shared Facilities	Entrance / Lobby / Manager's office / Storage / Large training room / Mailbox / Shoe box / Bicycle parking / Garbage storage / Security cameras / Vacuum cleaner, etc.
(Shared Space)	Living room, Shower room, Toilet room, Wash room, Washing machine, Kitchen (Refrigerator, IH cooking heater, Rice cooker, Microwave oven), Air conditioner
(Private room in unit)	Bed, Desk, Chair, Bookcase, Closet, Chest of drawers, Air conditioner, Curtain, Balcony, Clothes-drying pole, LAN jack
Area	Private room : Approx. 10 m <sup>2</sup> (3.6m x 2.8m) Living room (middle training room): Approx. 16.8 m <sup>2</sup> (6m x 2.8m) Unit shower: approx. 4 m <sup>2</sup> Unit toilet: approx. 2 m <sup>2</sup>

- The beds do not have mattresses, so you will need a mattress (futon), quilt, and pillow.
- There is a refrigerator in the shared space, so you cannot bring your own refrigerator to save electricity.
- Internet subscription is optional.

### ▼floor map



2・3階平面図



1階平面図