

Application guidelines for admission to GCC in April 2024

1. Residents

- 2nd-4th grade students of the Faculty of Engineering, students of the Faculty of Engineering (regardless of gender)
- 1st grade students of the Faculty of Engineering (female only)

2. Type of Housing

One unit is shared by three male students or three female students, including Japanese and international students. Men and women live on separate floors, and opposite-sex people are strictly prohibited from entering each floor.

Note: On a temporary basis, a cot may be brought into the living room and the following people may be accepted into the unit (arrangements will be made in advance).

- Those who come to Kyutech through the international student exchange program (short-term acceptance) implemented by the university.
- Those who are enrolled in Kyutech that has concluded an international exchange agreement with the University and are coming to the university through an international exchange program.

3. Conditions for moving in (collaborative learning)

- Residents should participate in collaborative learning that is held about six times a year.
- Act as a buddy for those who come to the school through the international exchange program.

4. Number of applicants

About 14 male students (including about 2~5 international students)
/ about 4 female students (including about 2~3 international students)

5. Permission period

As a general rule, it is one year from April 1, 2024.

However, if a student who participated in the collaborative learning without absent and wishes to continue moving in applies for an extension of the period of stay and is granted permission, the extension can be extended for up to one year.

If you lose your status as a student of our university due to graduation, completion, withdrawal, etc., you will be evacuated.

6. Deadline for submission of application form

January 10, 2024 (Wed) 16:00 JPT (Notice date of move-in permission: Early February 2024)

7. Where to submit application documents and inquiries

Please download the application form from the link below, and send it by e-mail or bring it with you.

【Download from】 <https://www.tobata.kyutech.ac.jp/campus/gcc/>

【Where to submit application documents】

Kyushu Institute of Technology, Faculty of Engineering, Student Section

E-mail koh-gakusei@jimukyutech.ac.jp

(Office hours: 9:00 a.m. to 5:00 p.m., Mon through Fri, excluding Sat, Sun, and holidays)



8. Selection Method and Results

The selection of applicants will be based on the contents of the application and a face-to-face interview.

Schedule for the interview: January 17, 2024 (Wed) 18:00-19:30 JPT

The result of the interview will be notified directly to the applicant by e-mail.

9. About GCC

(1) Rent: 15,000 yen/month

(2) Utilities: 6,000 yen/month (monthly fee may be revised depending on actual usage)

The usage fee and utility fee will be collected by the payment slip distributed at the beginning of each month.

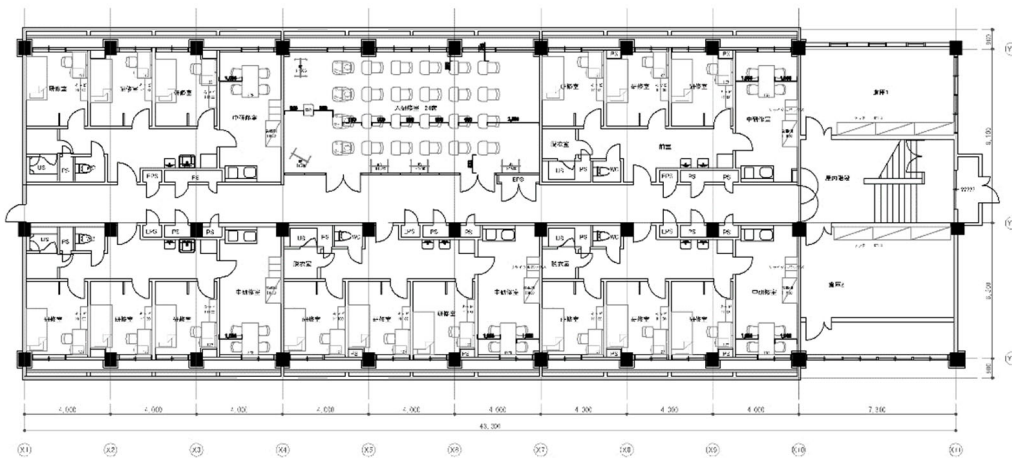
(3) Location: Kyushu Institute of Technology Global Cultivation Center

2-1 Sensui-cho, Tobata-ku, Kitakyushu City, Fukuoka 804-0015

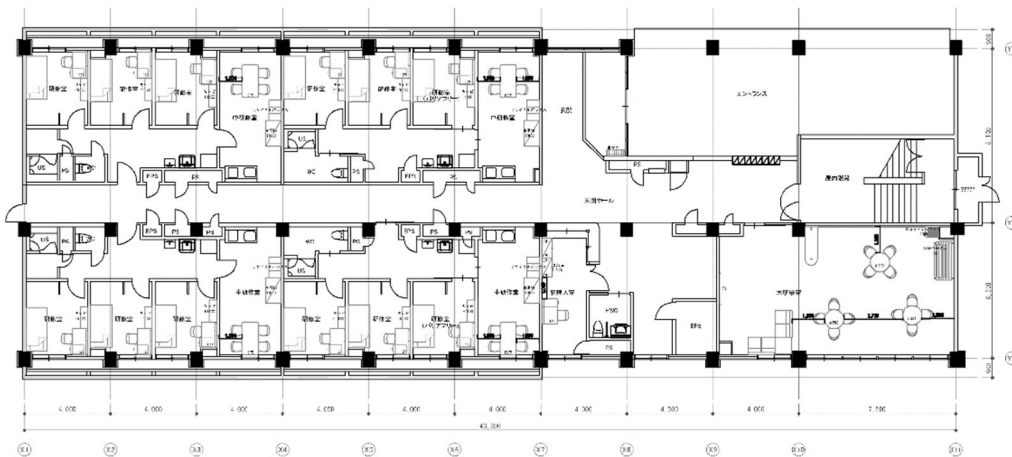
Number of occupants	42 people (3 private rooms and a common space make up a unit, and 14 units are located on the 1st to 3rd floors of the building. Two units on the first floor are barrier-free.)
Structure	Reinforced concrete construction (no smoking on the premises)
Shared Facilities	Entrance / Lobby / Manager's office / Storage / Large training room / Mailbox / Shoe box / Bicycle parking / Garbage storage / Security cameras / Vacuum cleaner, etc.
(Shared Space)	Living room, Shower room, Toilet room, Wash room, Washing machine, Kitchen (Refrigerator, IH cooking heater, Rice cooker, Microwave oven), Air conditioner
(Private room in unit)	Bed, Desk, Chair, Bookcase, Closet, Chest of drawers, Air conditioner, Curtain, Balcony, Clothes-drying pole, LAN jack
Area	Private room : Approx. 10 m ² (3.6m x 2.8m) Living room (middle training room): Approx. 16.8 m ² (6m x 2.8m) Unit shower: approx. 4 m ² Unit toilet: approx. 2 m ²

- The beds do not have mattresses, so you will need a mattress (futon), quilt, and pillow.
- There is a refrigerator in the shared space, so you cannot bring your own refrigerator to save electricity.
- Internet subscription is optional.

▼floor map



2・3階平面図



1階平面図